

**2024 DISTRICT 10
CLARION COUNTY
SPRING OUTREACH**

DISTRICT 10 CONTACTS

District Executive, Brian Allen, P.E. - 724-357-2806

Assistant District Executive - Construction, Paul Koza, Jr., P.E. - 724-357-2812

Assistant District Executive - Design, Alice Hammond, P.E. - 724-357-2805

Assistant District Executive - Maintenance, Matthew Burkett - 724-357-2809

Community Relations Coordinator, Tina Gibbs - 724-357-2829

District 10 Website: www.penndot.pa.gov/RegionalOffices/district-10/Pages/default.aspx

District Office (10-0)

2550 Oakland Avenue

Indiana, PA 15701

724-357-2800

Standard hours of operation are 8:00 AM to 4:30 PM.

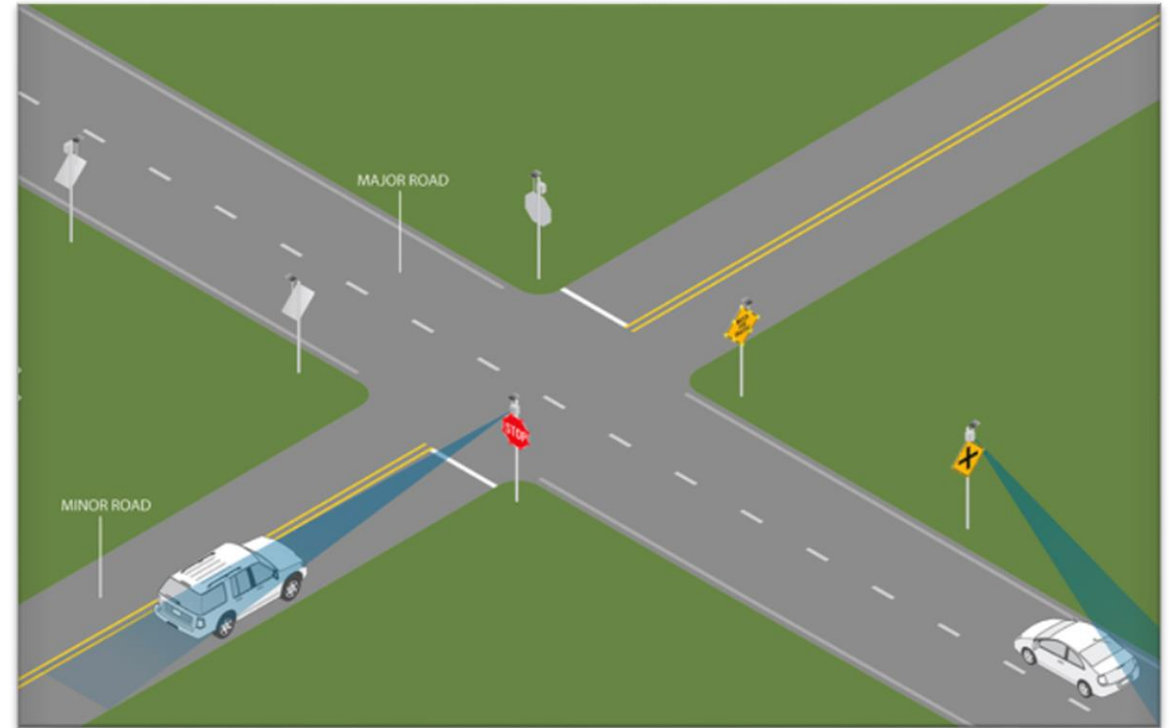


2024 SPRING OUTREACH CONSTRUCTION

INTERSECTION ITS GROUP PROJECT

- ECMS # 117907
- Various Intersections:
 - SR 85 & SR 2001 (Water Street), Rural Valley Boro. – Armstrong County
 - SR 8 & SR 4010 (Branchton Road) – Slippery Rock Twp. - Butler County
 - SR 4010 (Branchton Road) & Harmony Road, Slippery Rock Twp. – Butler County
 - SR 322 & Bus Mong Road, Ashland Twp. – Clarion County
 - SR 422 & SR 403, Pine Twp. – Indiana County
 - SR 322 & SR 1830, Pine Creek Twp. – Jefferson County
- Cost: \$595,562
- Anticipated Completion: 1/14/25

- Contractor: Bronder Technical Services
- Installation of conflict warning devices



2024 DISTRICT 10 SMALL PAINT

- ECMS # 119740
- Cost: \$615,660
- Anticipated Completion: 5/31/25
- Prime Contractor: Oglesby Construction
- Paint Legends along various routes in Armstrong, Butler, Clarion, Indiana, and Jefferson Counties



2024 DISTRICT RPM

- ECMS # 119739
- District wide
- Cost: \$154,968
- Anticipated Completion: 8/30/24
- Prime Contractor: Green Acres Contracting
- RPMs along various routes in Armstrong, Butler, Clarion, Indiana, and Jefferson Counties



2024 COUNTY GUIDERAIL PROJECTS

- ECMS # 119734, 119735, 119736, 119737, 119738
- County wide projects, various SR's
- Estimate: <\$1.0M per project
- Let Date: 05/09/2024
- Repair and replacement of guiderail on various routes



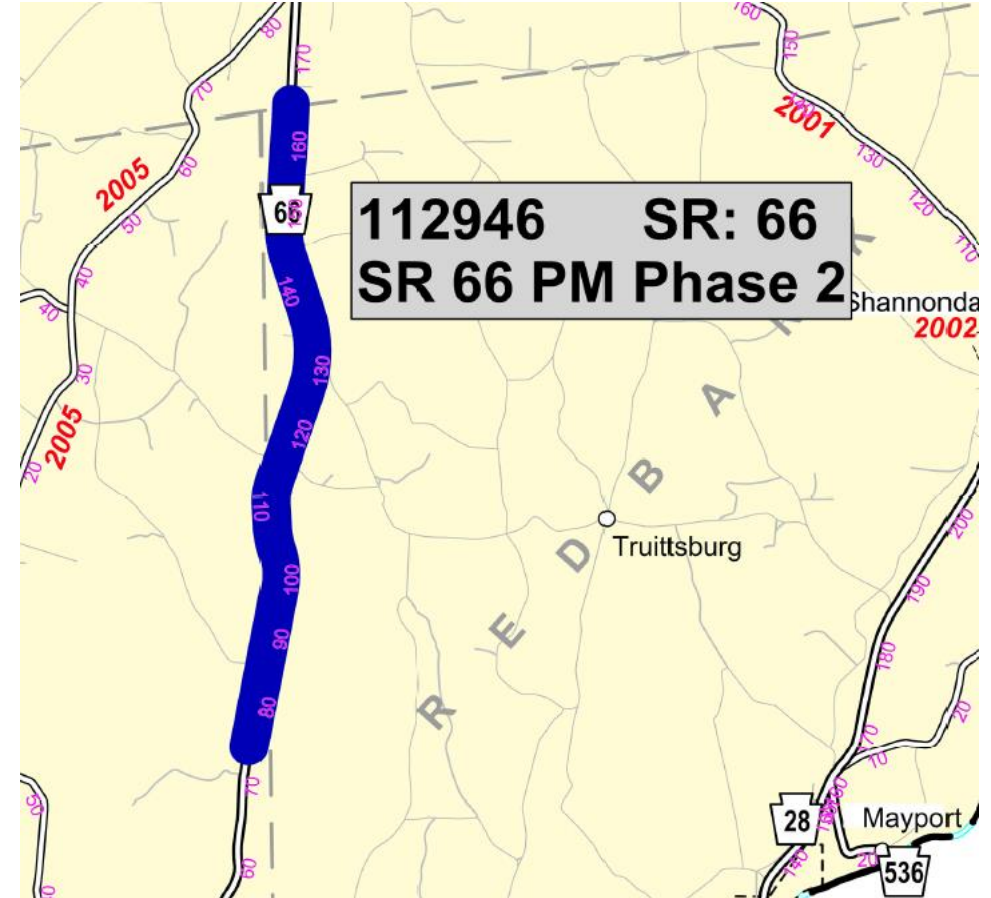
STRATTANVILLE TO COUNTY LINE RESURFACING

- ECMS # 115154
- SR 322
- Clarion Township
- Cost: \$2,044,778
- Anticipated Completion: 6/21/24
- Prime Contractor: IA Construction Corp.
- Milling, patching, paving, drainage, and guiderail



SR 66 PM PHASE 2

- ECMS # 112946
- SR 66
- Limestone, Porter & Redbank Townships
- Cost: \$2,497,778
- Anticipated Completion: 6/28/24
- Prime Contractor: IA Construction Corp.
- Milling, patching, paving, drainage, and guiderail



BRADY TUNNEL REHABILITATION

- ECMS # 118364
- Armstrong Trails
- East Brady Borough
- Cost: \$1,377,000
- Anticipated Completion: 9/20/24
- Prime Contractor: Francis J. Palo, Inc.
- Historic preservation and rehabilitation



CLARION RIVER BRIDGE

- ECMS # 109300
- I-80
- Paint Township
- Cost: \$5,073,104
- Anticipated Completion:
9/20/24
- Prime Contractor: Swank
Construction Company
- Bridge Rehabilitation



WAYNE RICHARD WEAVER PRESERVATION

- ECMS # 117569
- SR 1005
- Highland Township
- Cost: \$2,339,100
- Anticipated Completion: 10/30/2024
- Prime Contractor: Swank Construction Company
- Bridge Preservation of structure over Clarion River
- Phased construction from 4/8/2024 to 10/15/2024



SR 2009 RIMERSBURG BRIDGE

- ECMS # 110092
- SR 2009 over Cherry Run
- Toby Township
- Cost: \$791,007
- Anticipated Completion:
12/03/24
- Prime Contractor: Francis
J. Palo, Inc.
- Bridge replacement
- Detour for 49 days



SR 208 COUNTY LINE TO KNOX PHASE 2

- ECMS # 118045
- SR 208
- Salem & Beaver Townships
- Cost: \$1,778,311
- Anticipated Completion: 7/12/24
- Prime Contractor: IA Construction
- Milling, patching, paving, drainage, and guiderail updates



CLARION RIVER ARCH BEARINGS

- ECMS # 117549
- SR 322
- Clarion & Paint Townships
- Estimate: \$2.5M - 5.0M
- Let Date: 9/12/2024
- Bridge preservation
- Weekend detours



PA 68 DOLBY STREET TO TROUT RUN

- ECMS # 106502
- SR 68
- Clarion & Monroe Township
- Estimate: \$10M – 20M
- Let Date: 9/26/24
- Safety Improvement – adding center turn lane, bridge replacement



SR 2009 CHERRY RUN CHURCH BRIDGE

- ECMS # 116596
- SR 2009 (Cherry Run Road)
- Toby Township
- Estimate: \$1.0M - \$2.5M
- Let Date: 10/24/2024
- Bridge replacement of structure over Cherry Run
- Detour



2024 SPRING OUTREACH DESIGN

Roadway Projects



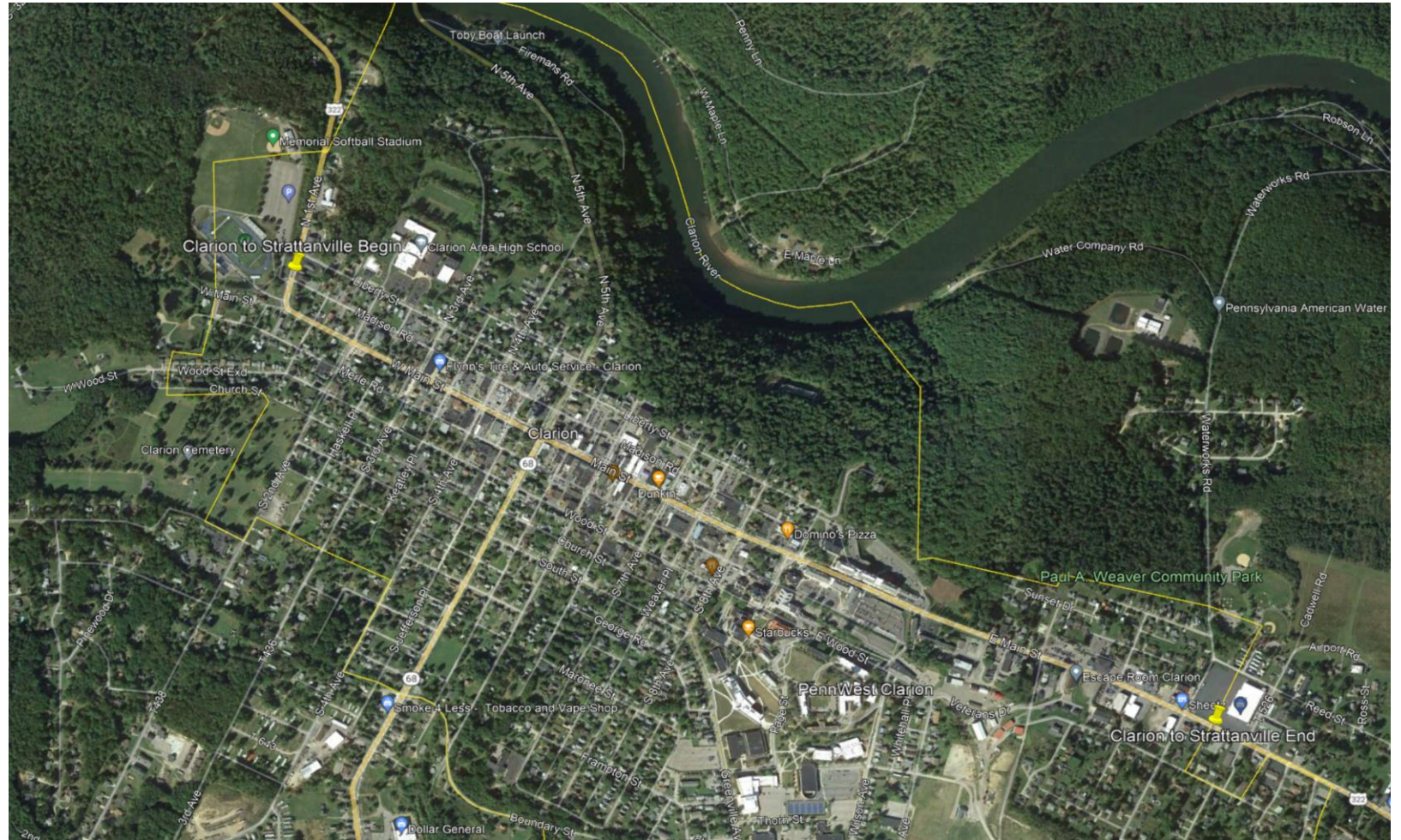
PA 68 RIMERSBURG RESURFACING

- PA 68
- Resurfacing
- Piney & Toby Townships and Rimersburg & Sligo Boroughs
- Construction in 2025
- Construction Estimate: \$2.5M - \$5M

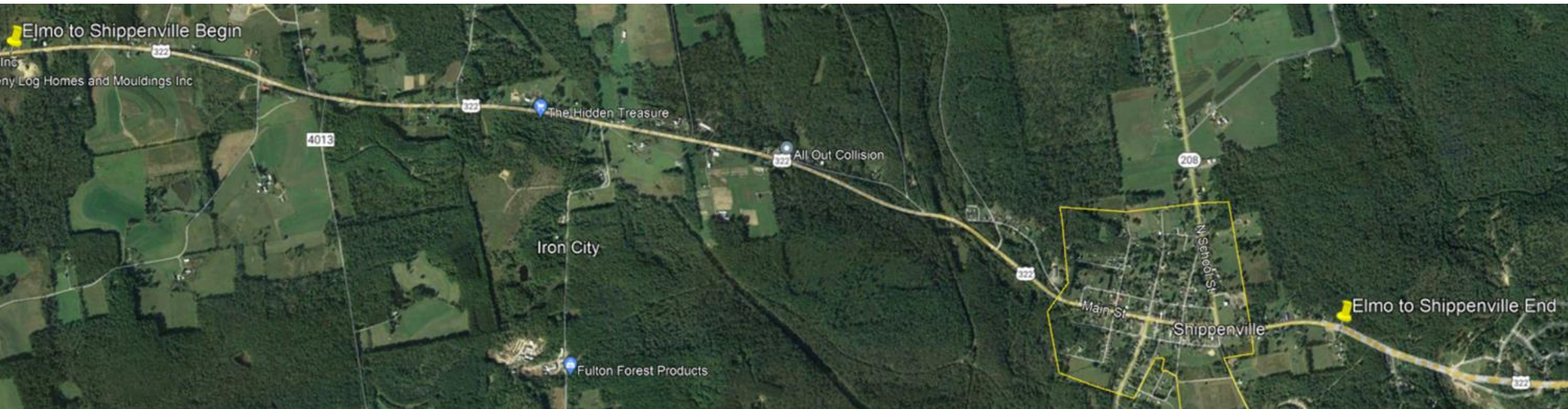


US 322 CLARION TO STRATTANVILLE

- Route 322
- Preventative Maintenance
- Clarion Borough
- Construction in 2026
- Construction Estimate: \$1M-\$2.5M



ELMO TO SHIPPENVILLE



- Route 322
- Preventative Maintenance
- Ashland & Elk Townships, Shippenville Borough
- Construction in 2025
- Construction Estimate: \$2.5M-\$5.0M



Bridge Projects



CHERRY RUN CHURCH BRIDGE

- SR 2009
- Bridge Replacement
- Toby Township
- Construction in 2025
- Construction Estimate:
\$1.0M - \$2.5M



SLIGO PEDESTRIAN BRIDGE

- Pedestrian Bridge Replacement
- Sligo Borough
- Construction in 2025
- Construction Estimate: \$500K - \$1M



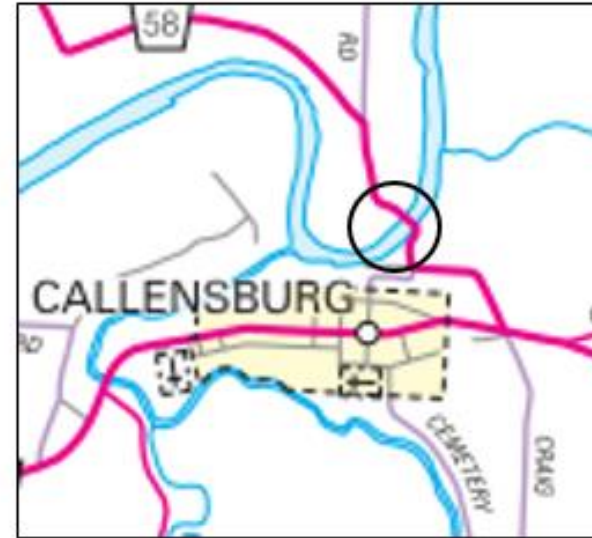
CLARION RIVER ARCH BEARINGS

- US 322
- Bridge Preservation
- Clarion & Paint Townships
- Construction in 2025
- Construction Estimate:
\$1.0M - \$2.6M



CLARION BRIDGE EPOXY GROUP

- SR 58, PA 536, and PA 28
- Bridge Preservation
- Various Municipalities
- Construction in 2025
- Construction Estimate: \$300K - \$750K



PILGRIMHAM BRIDGE #1

- PA 208
- Bridge Replacement
- Salem Township
- Construction in 2025
- Construction Estimate: \$1.0M - \$2.5M



T-327 OVER CANOE CREEK

- T-327 Shettler Road
- Bridge Replacement
- Beaver Township
- Construction in 2027
- Construction Estimate: \$0.75M - \$1.0M



BOYD RUN CULVERT

- Interstate 80
- Culvert Rehabilitation
- Beaver Township
- Construction in 2027
- Construction Estimate:
\$2.5M - \$5.0M



PAINT CREEK BRIDGE

- US 322
- Bridge Replacement
- Elk Township
- Construction in 2027
- Construction Estimate:
\$7.5 - \$8.0M



LITTLE LICKING CREEK BRIDGE NO.1

- PA 68
- Bridge Replacement
- Sligo Borough
- Construction in 2027
- Construction Estimate:
\$1.0M - \$2.5M



PAINT MILLS BRIDGE

- SR 4029
- Bridge Replacement
- Paint Township
- Construction in 2027
- Construction Estimate: \$1.5M - \$2.0M



CRAIG ROAD BRIDGE

- Route 3013
- Bridge Replacement
- Licking Township
- Construction: TBD
- Construction Estimate: \$1.0 - \$2.5



**2024 SPRING OUTREACH
CLARION COUNTY
COUNTY MAINTENANCE**

CLARION COUNTY MAINTENANCE

- **County Manager - Joshua Clinger**
- **Assistant County Manager - Matthew Smith**
- **Assistant County Manager - Mark Culp**
- **County Equipment Manager - Brant Cirrincione**
- **Roadway Programs Coordinator – Ashley Dunkle**
- **Adopt a Highway Coordinator - Amy Cary**



**21057 Paint Blvd.
Shippenville, PA 16254
814-226-8200**



CLARION COUNTY WINTER

2023 – 2024 County Winter Maintenance	5-year average	Used to Date
Budget (personnel & operations)	\$2,127,118	\$1,229,814
Salt (tons)	9,599	4,015
Anti-Skid (tons)	7,101	2,876
Brine (gallons)	194,179	116,670



CLARION COUNTY OUTREACH

Winter Municipal Agreements

MUNICIPALITY

MILES COVERED

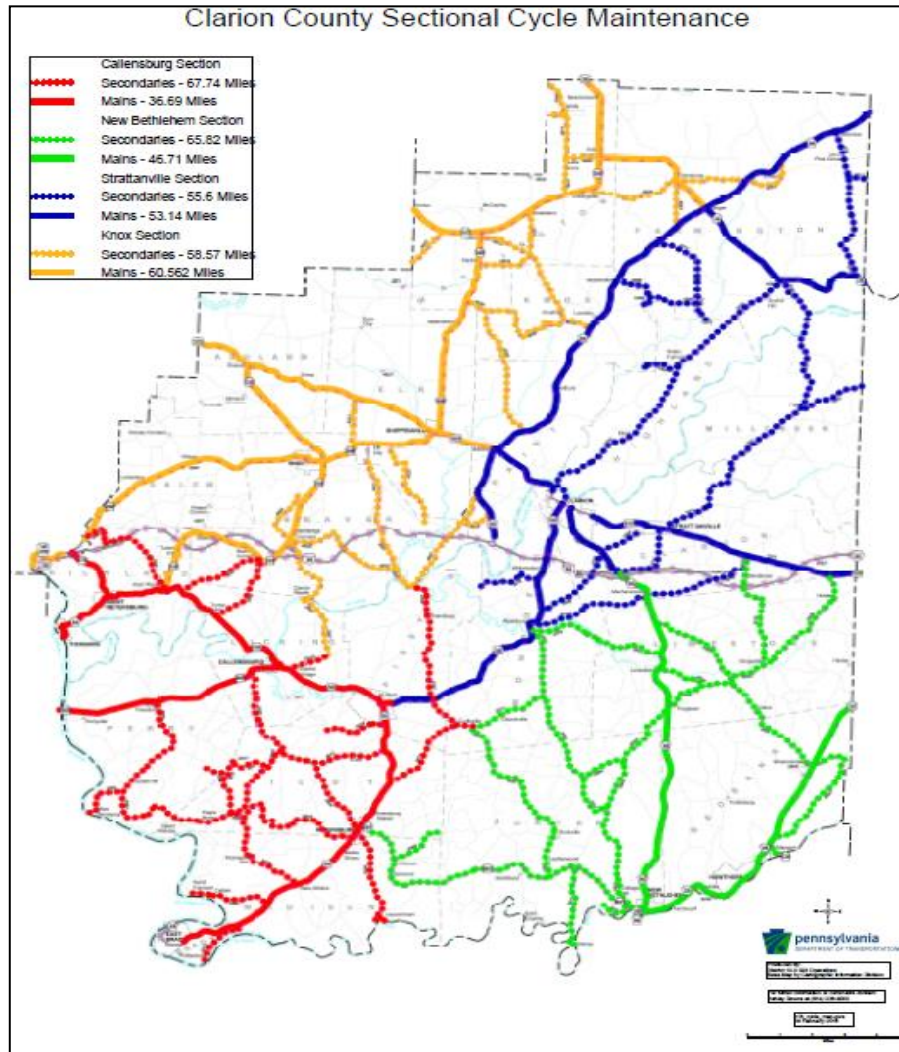
<i>Mahoning Township</i>	<i>.229</i>

TOTALS

.229



2024 CLARION COUNTY SECTIONAL CYCLES



- Section 1: General Maintenance
- Section 2: General Maintenance / Drainage
- Section 3: Shoulder Grading
- Section 4: Sealcoat Surface Treatment



CLARION COUNTY OUTREACH

Seal Coat Surface Treatment (tar & chip)
Planned for 2024: 276,881 gallons
Completed 2023 = 283,688 gallons



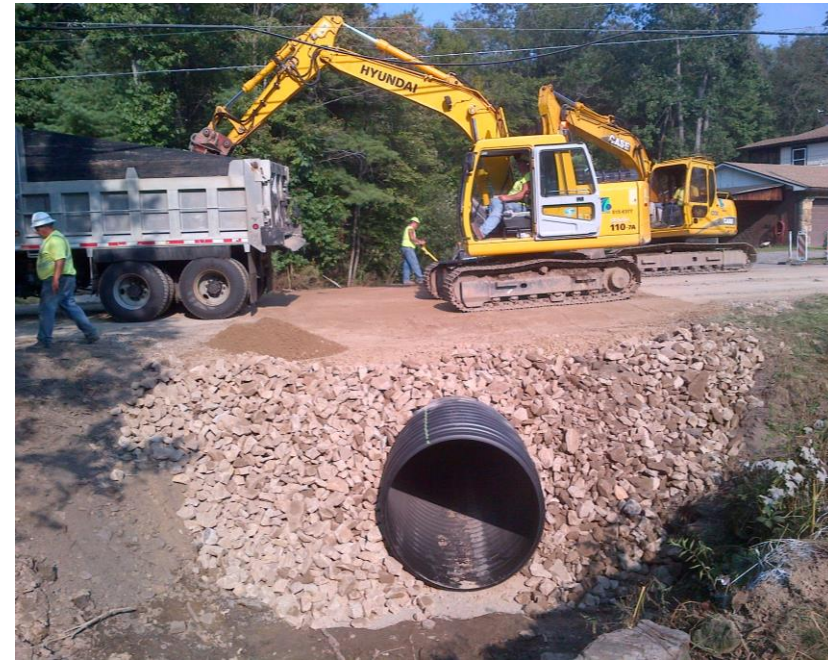
CLARION COUNTY OUTREACH

Shoulder Cutting & Grading
Planned for 2024: 210 miles
Completed 2023 = 331 miles



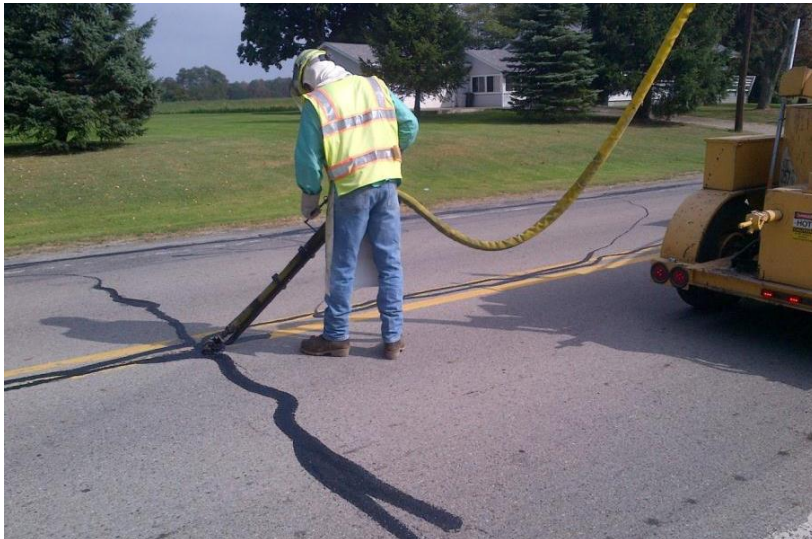
CLARION COUNTY OUTREACH

Pipe Replacement
Planned for 2024: 1,575 feet
Completed 2023 = 1,480 feet



CLARION COUNTY OUTREACH

Crack Sealing Roads & Shoulders
Planned for 2024: 212 miles
Completed 2023 = 278 miles



CLARION COUNTY OUTREACH

Precast pipe headwalls / end walls

- Formed & poured in county
- Used for summer operations



CLARION COUNTY OUTREACH

Department Force Culvert Restoration 2023 SR 4008 over Mahles Run in Knox Twp.



CLARION COUNTY OUTREACH



Before

SR 4029 Paint
Mills Road Project
Culvert Repair /
Restoration



After



Department Force Bridge Priority Work 2024



- SR 36 seg 120, 130 and 240 – Repair Culvert & Scour
- SR 38 seg 60 – Scour, Abutment and Deck repairs
- SR 66 seg 310 – Beam strands and bearings
- SR 80 seg 445 – Downspout, slope wall and deck repair
- SR 322 seg 306 – Rock, baffles, debris
- SR 2003 seg 150 – Repoint masonry
- SR 3002 seg 40 – Rock Abutment



CLARION COUNTY AGILITY

Agility Program

Agility is a tool to build relationships with local communities by sharing and exchanging services and resources.

PREVIOUS WORK PLANS

Clarion County Career Center

- **PennDOT – perform maintenance on lot and access road**
- **Career Center – provide storage sheds built by the building & trades students for use at Department facilities.**

Possible opportunities are available

- County Contacts: 814-226-8200
 - ✓ Matthew Smith
 - ✓ Mark Culp



CLARION COUNTY PAINT THE PLOW



Keystone High School of Clarion County won the "Fan Favorite" award



2024 SPRING OUTREACH

TINA GIBBS

COMMUNITY RESOURCES COORDINATOR

DISTRICT 10 WEB RESOURCES

Doing Business with PennDOT Resource Guide

Subscribe to District 10 news

Coming soon –

Spring Outreach Meeting presentations and maps

They will be posted under Outreach by county within a week following the meeting.


DOT > Regional Offices > District 10

District 10

Counties: Armstrong | Butler | Clarion | Indiana | Jefferson

PennDOT's Engineering District 10 is responsible for the state-maintained transportation network in this region. This includes 3,180 total road miles and 1,630 total bridges.

We also work with local governments, elected officials, stakeholders and the public on keeping people and goods moving safely and efficiently in this region.



District Links

- [Construction Projects/Roadwork](#)
- [Public Meetings/Studies](#)
- [Maintenance and Traffic Bulletins](#)
- [Permits](#)
- [Right of Way](#)
- [Submit Roadway Concern](#)
- [ISO 9001:2015 Certified Project Delivery](#)

Press Releases

[Doing Business with PennDOT District 10.pdf](#)

[PennDOT Announces Virtual Plans Display for Wayne Richard Weaver Bridge Preservation in Clarion Borough and Highland Township, Clarion County](#)

02/14/2023

The Pennsylvania Department of Transportation (PennDOT) invites the public to view plans regarding the bridge preservation project of the existing structure (Wayne Richard Weaver Bridge) carrying State Route 1005 over the Clarion River in Clarion Borough and Highland Township, Clarion County...

[Read More](#)

[U.S. 422 Closure in Kittanning Township, Armstrong County](#)

02/10/2023

Subscribe to District 10 News

Enter your email

[Subscribe](#)

[Accomplishments](#)

[Paint the Plow](#)

[FAQs](#)



CONNECT WITH PENNDOT

Join our Groups on Facebook:

[Pittsburgh PennDOT](#)

[Northwest PennDOT](#)

X:

[@511PA Erie](#)

[@511PA Pittsburgh](#)



Thank-you

